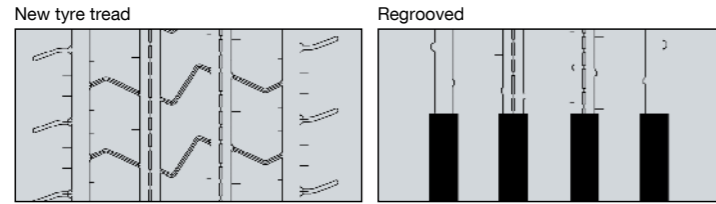


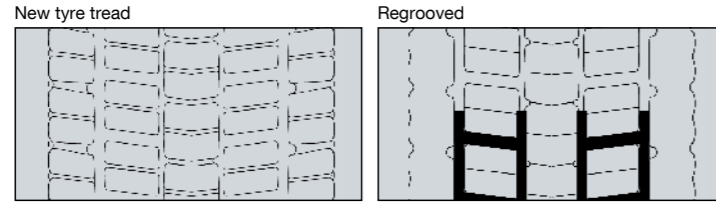
Regrooving information

SP 344



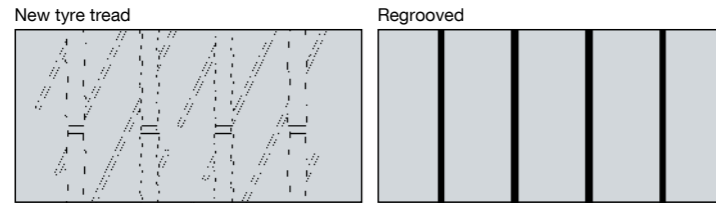
Regrooving depth: 3mm. Regrooving width: 6-8mm. Retreadable by Dunlop MultiTread.

SP 444



Regrooving depth: 3mm. Regrooving width: 6-8mm. Retreadable by Dunlop MultiTread.

SP 244



Regrooving depth: 3mm. Regrooving width: 6-8mm. Retreadable by Dunlop MultiTread.

Regrooving must be done by professionals.
Non-professional regrooving damages tires and causes premature tire removal.

Truck Tyre Label

Thanks to new legislation, commercial vehicle operators are to be helped in choosing their tyres.

Tyre labelling, which the European Union will introduce on 1st November 2012, will ensure that tyres sold in the EU are accompanied by data related to their fuel efficiency, wet grip and exterior noise.

Clear and informative, the label information resembles that on existing energy efficiency labels with A being the highest performing and G the lowest.



FUEL EFFICIENCY / ROLLING RESISTANCE

A = Most fuel efficient tyre
F = Least fuel efficient tyre
(Class G will not be used for truck tyres)



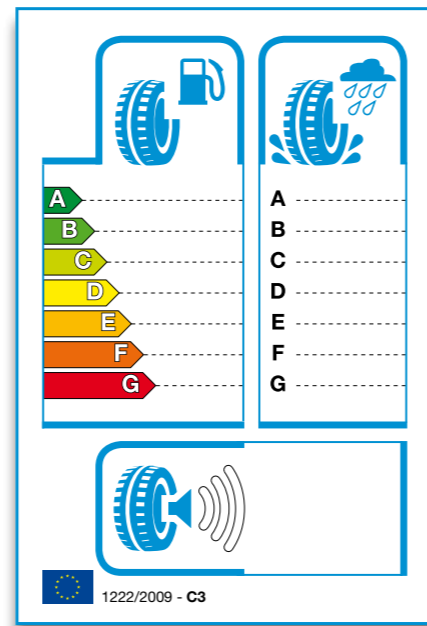
WET GRIP / BRAKING

A = Shortest braking distance
F = Longest braking distance
(Class G will not be used for truck tyres)



NOISE EMISSION / EXTERIOR NOISE

Measured in decibels (dB)
Three classes
(One wave corresponding to the quietest tyre, three to the noisiest)



SP 344, SP 444 and SP 244

The latest On Road Range, designed to meet today's transport needs



DUNLOP

www.dunlop.eu/truck

DRIVE WITH CONFIDENCE

DUNLOP

www.dunlop.eu/truck

DRIVE WITH CONFIDENCE

SP 344, SP 444 and SP 244

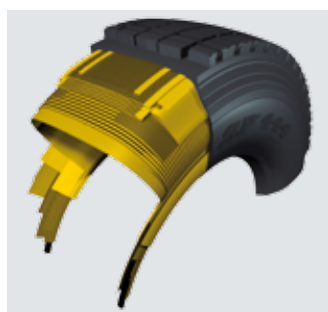
The latest “on road transport” tyre range

Dunlop's latest range of steer (SP 344), drive (SP 444) and trailer (SP 244) tyres in 22.5” sizes have been specifically developed to suit a multitude of applications, from delivery service, short and regional haul distribution operations to long haul transport.

Fleets benefit through excellent mileage, reduced cost per km, wide application range and damage resistant, durable carcasses - for enhanced transport efficiency.

Easier tire management through the use of the SP344, SP444 and SP244 range is an additional benefit for fleets.

Drivers benefit from good handling and stability as well as good traction and braking on wet and snow.



The use of latest technology carcass and belt materials, combined with a dedicated tread compound and tyre geometry result in enhanced damage resistance and retreadability.

SP 344

Steer

Advantages	Benefits	Label Criteria
Excellent mileage potential	Reduced cost per km	
Retreadability		
Reduced rolling resistance	Fuel savings	✓
High damage resistance	Reduced downtime and cost of maintenance	
Excellent wet grip (braking)	Confidence in wet conditions	✓
Good level of lateral stability	Driving comfort	

SP 344 - Size line up and technical details

Size	Load Index	Speed Symbol	Poss. Rim widths	Inflation (bar)	🛢️	🌧️	🌀
275/70R22.5	148/145	M	7.50 / 8.25	9.00	D	C	71))
295/60R22.5	150/147 (149/146)	K (L)	9.00 / 9.75	9.00	C	B	71))
295/80R22.5	152/148	M	8.25 / 9.00	8.50	D	C	72))
315/60R22.5	152/148	L	9.00 / 9.75	9.00	C	C	71))
315/70R22.5	154/150 (152/148)	L (M)	9.00 / 9.75	9.00	C	B	72))
315/80R22.5	156/150 (154/150)	L (M)	9.00 / 9.75	8.50	C	B	72))
385/55R22.5	160 (158)	K (L)	11.75 / 12.25	9.00	B	B	71))
385/65R22.5	160 (158)	K (L)	11.75 / 12.25	9.00	C	C	73))

SP 444

Drive

Advantages	Benefits	Label Criteria
Excellent mileage potential	Reduced cost per km	
Retreadability		
Good all season traction (M+S marked)	Mobility in all weather conditions	
High damage resistance	Reduced downtime and cost of maintenance	
Good wet grip (braking)	Confidence in wet conditions	✓

SP 444 - Size line up and technical details

Size	Load Index	Speed Symbol	Poss. Rim widths	Inflation (bar)	🛢️	🌧️	🌀
275/70R22.5	148/145	M	7.50 / 8.25	9.00	D	C	79))
295/60R22.5	150/147 (149/146)	K (L)	9.00 / 9.75	9.00	D	C	78))
295/80R22.5	152/148	M	8.25 / 9.00	8.50	D	C	78))
315/60R22.5	152/148	L	9.00 / 9.75	9.00	E	D	77))
315/70R22.5	154/150 (152/148)	L (M)	9.00 / 9.75	9.00	D	C	78))
315/80R22.5	156/150 (154/150)	L (M)	9.00 / 9.75	8.50	D	C	78))

SP 244

Trailer

Advantages	Benefits	Label Criteria
Excellent mileage potential	Reduced cost per km	
Retreadability		
Low rolling resistance	Fuel savings	✓
High damage resistance	Reduced downtime and cost of maintenance	
Excellent wet grip (braking)	Confidence in wet conditions	✓

SP 244 - Size line up and technical details

Size	Load Index	Speed Symbol	Poss. Rim widths	Inflation (bar)	🛢️	🌧️	🌀
385/55R22.5	160 (158)	K (L)	11.75 / 12.25	9.00	B	B	70))
385/65R22.5	160 (158)	K (L)	11.75 / 12.25	9.00	C	B	71))
425/65R22.5	165	K	12.25 / 13.00 / 14.00	8.25	B	B	69))
445/65R22.5	169	K	13.00 / 14.00	9.00	B	B	71))