



DRIVERS
KNOW.

SP362

Winter tyre for steer axles





SP 362 – WINTER TYRE FOR STEER AXLES

The new Dunlop SP 362 winter traction steer tyre is designed to provide excellent winter and ‘wet road’ capabilities. Developed for steer axle use on trucks, the SP362 is also usable as an ‘all position’ tyre on coaches where optimum traction and braking performances are required.

The dedicated tread pattern featuring staggered blocks, linked with tie-bars, the latest technology tread compound combined with the robust carcass construction make the SP362 an ideal fitment to cope with the requirements of today's truck and coach winter operations.

The optimized wide, deep tread pattern, featuring staggered centerline blocks and semi-open shoulders with radial notches, provides excellent winter traction, handling and steering capabilities. Z-blades included in the tread blocks improve wet braking and lateral grip, and assure a slow wear process.

The new, computer-optimized carcass geometry and the reinforced bead area are specifically designed to improve the carcass durability and, consequently, the retreadability of the SP362. An optimized belt package construction assures optimum handling and stability performance.

The use of the latest compound technology gives improved wet braking performance, low noise levels and optimum resistance to tread damage.

These features make the SP362 an ideal fitment for trucks having to operate in winter conditions. It is also an excellent tire for usage on coach drive axles or as “all position” fitment, allowing “all season” coach operation in various climate conditions.

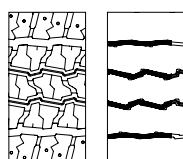
FEATURES	BENEFITS
Semi-open shoulder with radial blades and notches	Excellent snow and mud traction, wet braking with good self cleaning
Staggered “Z” blades	Provide good steering ability and lateral grip as well as excellent braking
Optimized block design with tie-bars	Even wear profile, good stability and low noise
Wide and deep tread pattern. Latest compound technology	Optimum mileage performance combined with excellent traction and braking
Reinforced bead area and optimized belt package	Robust carcass, damage resistant and retreadable



Size line up and technical details:

SIZE	Load/Speed Index	Max. Axle Load Single (kg)	Max. Axle Load Dual (kg)	Max. Inflation (bar)	Max. Outside Diameter (mm)	Max. Section Width (mm)	Static Loaded Radius (mm)	Rolling Circumf. (mm)	Min. Dual Spacing (mm)	Rec. Rim Width
295/80 R 22.5	152/148 L	7100	12600	8.50	1062	310	487	3180	335	9"
315/80 R 22.5	156/150 K (154/150L)	8000	13400	8.50	1096	318	500	3280	351	9"
315/70 R 22.5	154/150 K (152/148L)	7500	13400	9	1032	318	468	3090	351	9"
385/65 R 22.5	160 K (158 L)	9000		9	1092	405	496	3250		11.75"

New tyre tread Regrooved



Regrooving information:
 Regrooving depth: 3 mm
 Regrooving width: 6-8 mm
 Regrooving must be done by professionals.
 Non-professional regrooving damages tyres and causes premature tyre removal.

